



McNaughton Homes

The Community Builder



The Manchester

- 2,800 sq. ft.
- Gourmet Kitchen with Breakfast Area
- Generously sized Family room
- Four (4) bedrooms
- Full basement; Two car garage



WWW.MCNAUGHTONHOMES.COM . (717) 234-4000 . 4400 DEER PATH ROAD . SUITE 201 . HARRISBURG, PA 17110

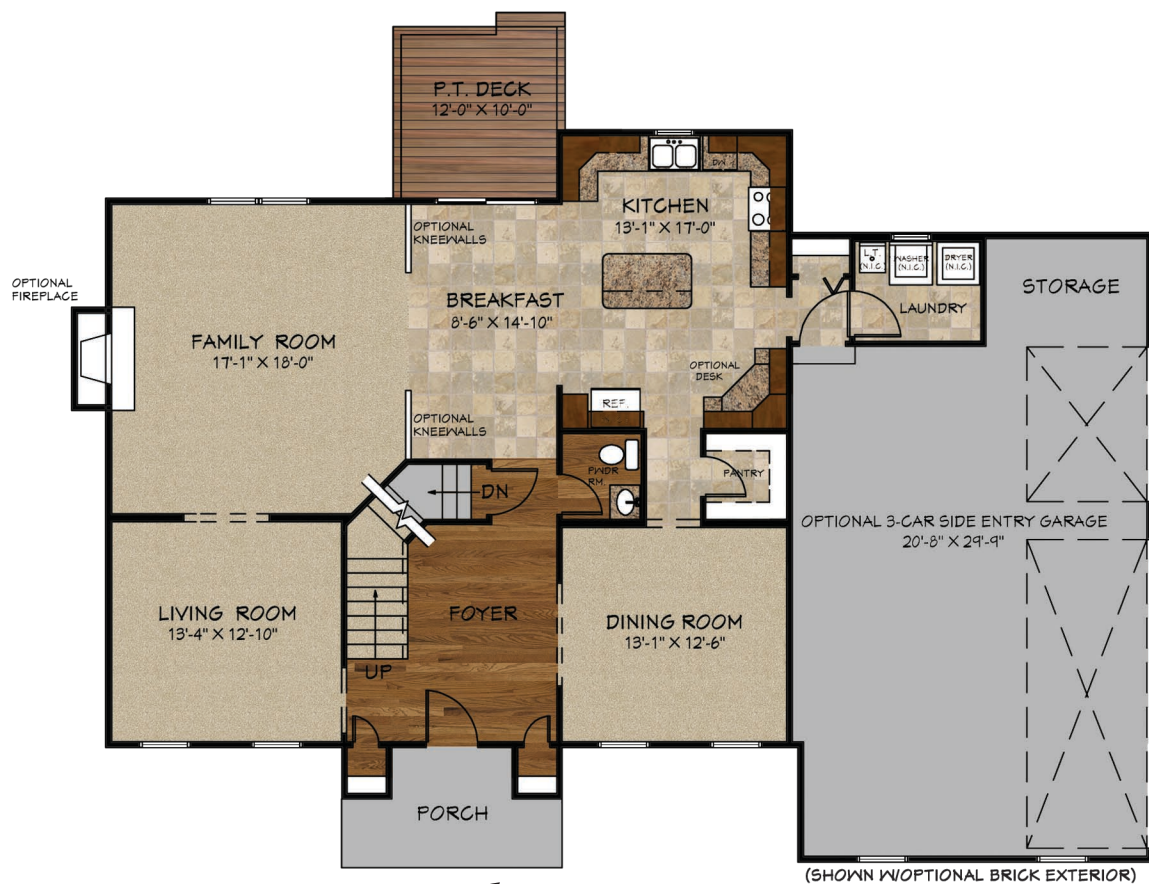


Photograph is for illustrative purposes only and may include features or finishes which are optional. See salesperson for details.

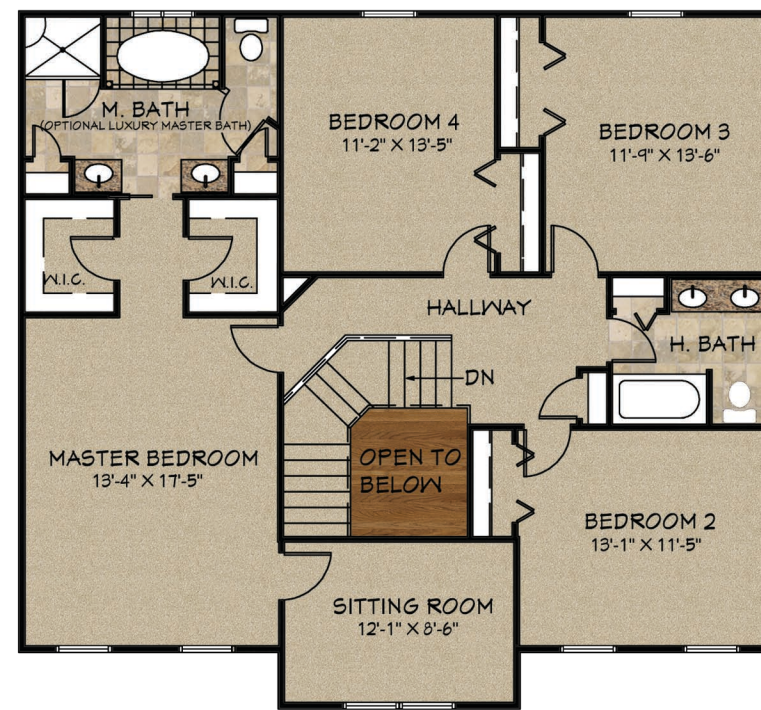


The Manchester

The Manchester features 2,800 square feet of luxurious living space. Formal living and dining rooms. Spacious kitchen and breakfast area. Generously sized family room. Two story foyer. Upstairs are four bedrooms and two full baths. Owner's suite features a sitting area and his and hers walk-in closets.



First Floor



Second Floor

