



McNaughton Homes

The Community Builder



The Hampton II

- 1,901 sq. ft.
- Gourmet Kitchen with Breakfast Area
- Generously sized Family room
- Three (3) bedrooms
- Full basement; Two car garage



WWW.MCNAUGHTONHOMES.COM . (717) 234-4000 . 4400 DEER PATH ROAD . SUITE 201 . HARRISBURG, PA 17110



Rendering is for illustrative purposes only and may include features or finishes which are optional. See salesperson for details.

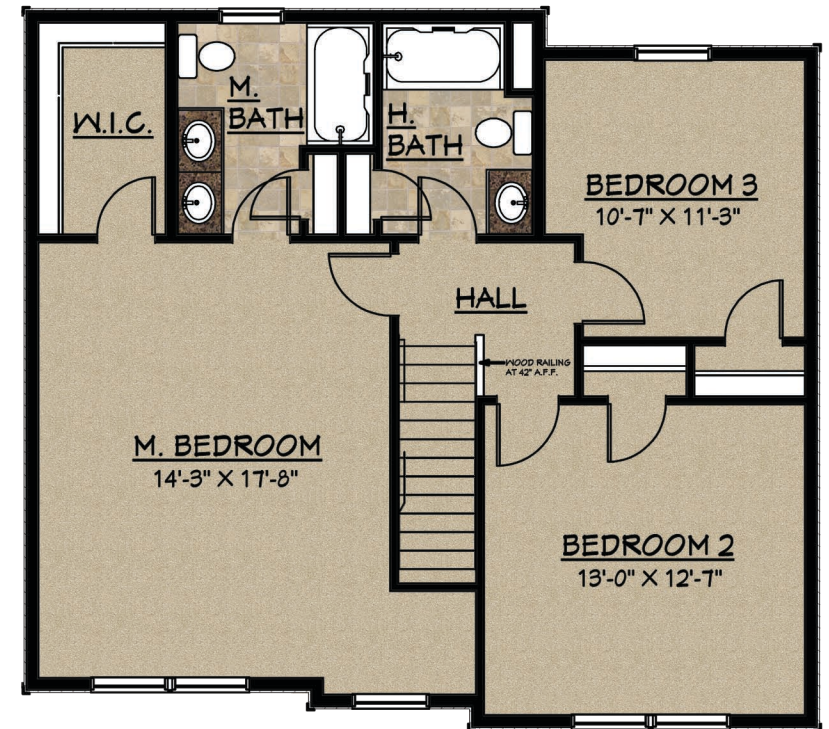


The Hampton II

The Hampton II features 1,901 square feet of luxurious living space. Two car garage, full basement, 2-1/2 baths, formal dining room, and beautiful kitchen and breakfast area with sliding glass door which leads to a deck. Spacious family room. Upstairs are three generously sized bedrooms.



First Floor



Second Floor

