



McNaughton Homes

The Community Builder



The Clifton

- 1,794 sq. ft.
- Kitchen with Breakfast Area
- Generously sized Living room
- Three (3) bedrooms
- Full basement; Two car garage



WWW.MCNAUGHTONHOMES.COM . (717) 234-4000 . 4400 DEER PATH ROAD . SUITE 201 . HARRISBURG, PA 17110



Rendering is for illustrative purposes only and may include features or finishes which are optional. See salesperson for details.

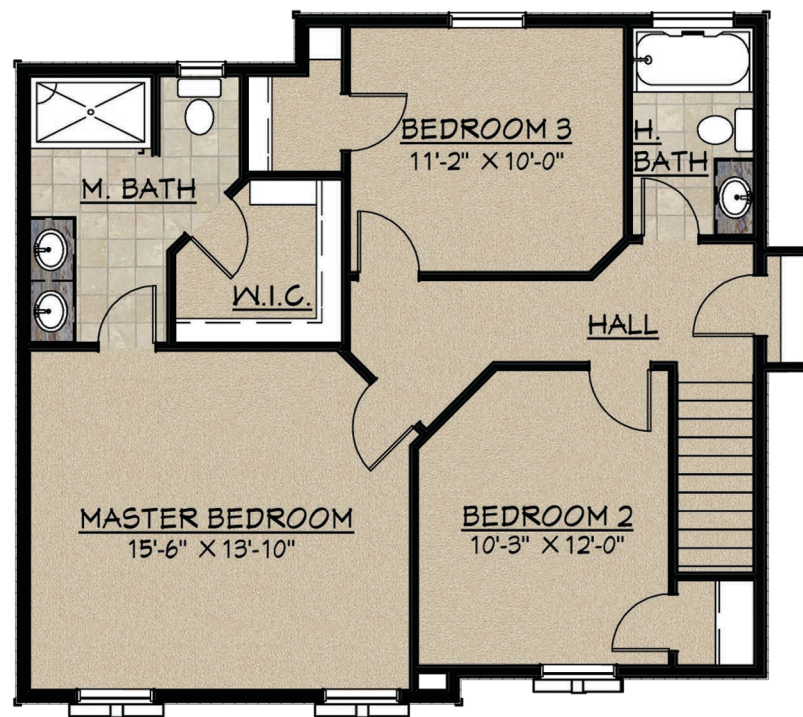


The Clifton

The Clifton features 1,794 square feet of luxurious living space. Three bedrooms, two and one-half baths, generously sized living room, first floor laundry, and breakfast area with sliding glass door leading to the deck. A front porch, gourmet kitchen, two car garage and full basement are also included.



First Floor



Second Floor

