

NEW HOME FOR SALE-LOT #18

THE FAIRMONT AT MARGARET'S GROVE



McNaughton Homes
Community Builder

4400 Deer Path Road, Suite 201, Harrisburg, PA 17110
Phone 717-234-4000 Fax 717-234-2000
www.McNaughtonhomes.com

Margaret's Grove

- *Award winning floor plan*
- *Spacious owner's suite with walk in closet*
- *Three (3) additional bedrooms*
- *Unfinished bonus room/5th bedroom*
- *Gourmet kitchen with breakfast area*
- *Sliding glass door to deck*
- *Nine foot (9') first floor ceilings*
- *Oversized two-car garage*
- *Two and one-half baths*
- *Poured concrete foundation*
- *Public water and sewer*
- *Spacious closet and linen storage*
- *Certified "Comfort Home"*
- *Andersen Tilt Windows*

**2,576 SQUARE FEET OF LUXURIOUS LIVING SPACE PLUS
265 SQUARE FEET OF OPTIONAL BONUS SPACE (ROUGH-IN)
YOUR INVESTMENT-\$358,900.00**



*Artist's rendering. Landscaping is for illustrative purposes only.
See salesperson for details on items which are shown and which may be optional.*

REV.12/08



McNaughton Homes
 . . . The Community Builder

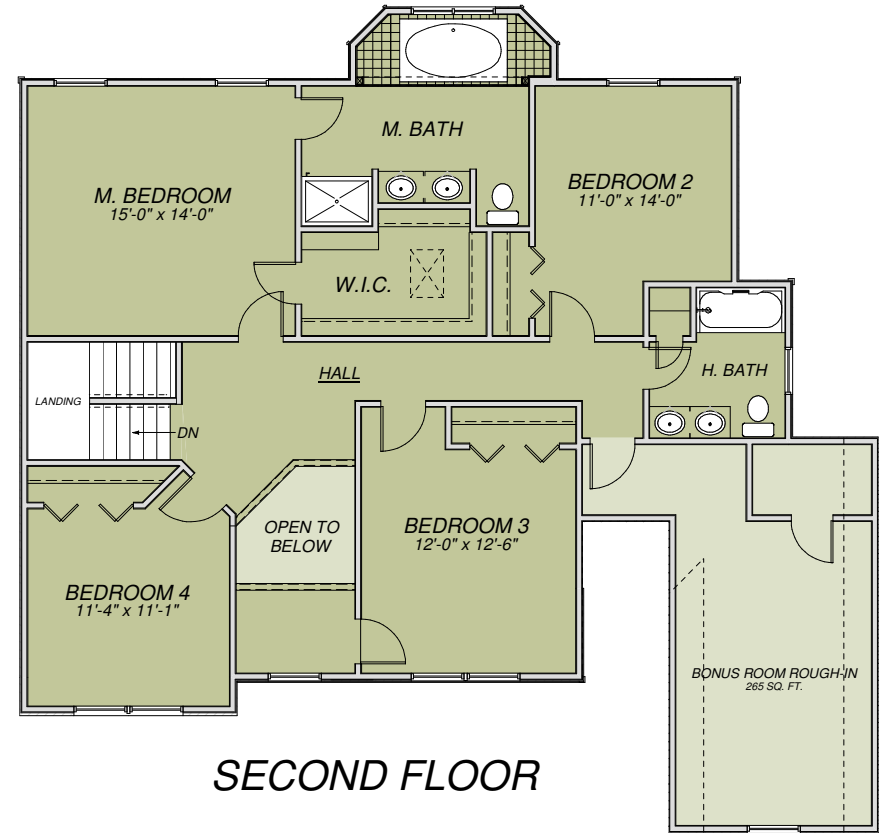
4400 Deer Path Road, Suite 201, Harrisburg, PA 17110
 Phone 717-234-4000 Fax 717-234-2000
 www.McNaughtonhomes.com

THE FAIRMONT

The Fairmont offers 2,576 square feet of living space with open foyer, large family room, kitchen with island and sliding glass door to deck, formal living and dining rooms, luxurious owner's suite with large walk in closet, three additional large bedrooms with plenty of closet space, optional large unfinished bonus room/5th bedroom (an additional 265 square feet), a first floor laundry, and two car garage.



FIRST FLOOR



SECOND FLOOR



ALTHOUGH ALL ILLUSTRATIONS AND SPECIFICATIONS ARE BELIEVED TO BE CORRECT AT THE TIME OF PUBLICATION, ACCURACY CANNOT BE GUARANTEED. THE RIGHT IS RESERVED TO MAKE CHANGES WITHOUT NOTICE OR OBLIGATION. ROOM SIZES SHOWN ARE APPROXIMATE. UTILITY LOCATIONS AND BASEMENT WINDOWS MAY VARY. SOME FEATURES SHOWN MAY BE OPTIONAL AND NOT INCLUDED IN PRICING. SEE SALES PERSON FOR DETAILS.